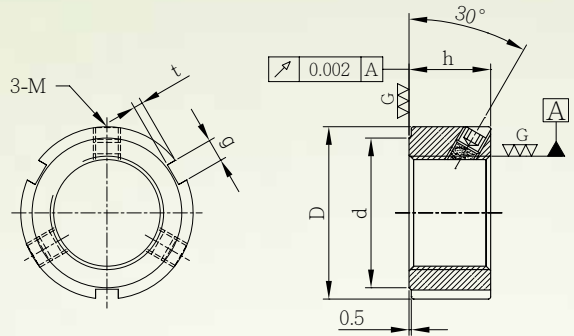
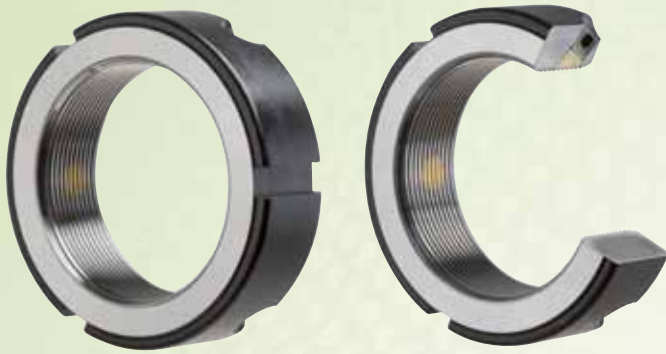


BF系列精密研磨螺帽 — 30°鎖定



- 本產品的螺牙及貼合平面為精密研磨加工，其制動螺絲之固鎖方向為30°配合螺紋角的設計，使制動銅完全貼合於螺紋面，更能達到安定精準的功能。
- 可免除鎖定墊片與鍵槽之需要。
- 容易組裝及拆卸。
- 組裝程序正確可重複使用。

- 材質 SCM 440
- 硬度 HRC 28-32
- 精度 ISO 4H

| 型號 | 尺寸 | | | | | 靜態軸向力 kN | 鬆脫力矩 kg-cm | 螺絲扭力 | |
|------------|-----|-----|----|-------|-----|-------------|---------------|------|---------|
| | D | d | h | n x g | t | | | DIN | 最大kg-cm |
| BF15X1.0P | 30 | 25 | 14 | 3X4 | 2 | 60 | 250 | M5 | 48 |
| BF17X1.0P | 32 | 27 | 16 | | | 70 | 300 | | |
| BF20X1.0P | 38 | 33 | 18 | | | 90 | 400 | | |
| BF20X1.5P | | | | 90 | 400 | M6 | 80 | | |
| BF25X1.5P | 45 | 40 | 20 | 3X5 | 2.5 | | | 120 | 800 |
| BF30X1.5P | | | | | | 145 | 1400 | | |
| BF35X1.5P | | | | | | 170 | 1800 | | |
| BF40X1.5P | 58 | 52 | 24 | 3X6 | 3.5 | 190 | 2200 | M8 | 190 |
| BF45X1.5P | 65 | 59 | | | | 220 | 2500 | | |
| BF50X1.5P | 70 | 64 | 26 | 6X10 | 4 | 250 | 2700 | | |
| BF55X2.0P | 75 | 68 | | | | 310 | 2900 | | |
| BF60X2.0P | 80 | 73 | | | | 350 | 3100 | | |
| BF65X2.0P | 85 | 78 | 30 | 6X12 | 5 | 400 | 3200 | M10 | 360 |
| BF70X2.0P | 92 | 84 | | | | 450 | 3400 | | |
| BF75X2.0P | 98 | 90 | | | | 480 | 3600 | | |
| BF80X2.0P | 105 | 96 | 32 | 6X14 | 6 | 580 | 3800 | M12 | 600 |
| BF85X2.0P | 110 | 102 | | | | 620 | 4000 | | |
| BF90X2.0P | 120 | 108 | | | | 680 | 4500 | | |
| BF95X2.0P | 125 | 113 | 36 | 6X16 | 7 | 720 | 4750 | | |
| BF100X2.0P | 130 | 118 | | | | 740 | 5000 | | |
| BF105X2.0P | 140 | 125 | | | | 770 | 5250 | | |
| BF110X2.0P | 145 | 132 | 38 | 6X16 | 7 | 800 | 5500 | M12 | 600 |
| BF115X2.0P | 150 | 137 | | | | 830 | 5750 | | |
| BF120X2.0P | 155 | 142 | | | | 860 | 6000 | | |
| BF125X2.0P | 160 | 147 | 36 | 6X16 | 7 | 890 | 6250 | M12 | 600 |
| BF130X2.0P | 165 | 152 | | | | 920 | 6500 | | |
| BF135X2.0P | 175 | 160 | | | | 950 | 6750 | | |
| BF140X2.0P | 180 | 165 | 36 | 6X16 | 7 | 980 | 7000 | M12 | 600 |
| BF145X2.0P | 190 | 175 | | | | 1010 | 7250 | | |
| BF150X2.0P | 195 | 180 | | | | 1050 | 7500 | | |
| BF155X3.0P | 200 | 190 | 34 | 6X14 | 6 | 1100 | 7750 | M12 | 600 |
| BF160X3.0P | 210 | | | | | 1200 | 8000 | | |
| BF165X3.0P | 220 | | | | | 200 | 1230 | | |
| BF170X3.0P | 230 | 205 | 36 | 6X16 | 7 | 1260 | 8500 | M12 | 600 |
| BF180X3.0P | 240 | 215 | | | | 1370 | 9000 | | |
| BF190X3.0P | 240 | 215 | | | | 1430 | 9500 | | |
| BF200X3.0P | 250 | 225 | 38 | 6X16 | 7 | 1500 | 9900 | M12 | 600 |

當您訂購以上產品時，請告知型號。

- 如您欲訂購特殊件左牙之精密螺帽，請加註- L 例如：BF25x1.5P-L。
- 如您欲訂購特殊件英制螺紋之精密螺帽，請加註- U20 (每英寸20牙) 例如：BF25-U20。
- 以上註明之特殊件均不備庫存，訂購時請提前下訂單，以方便您的使用。